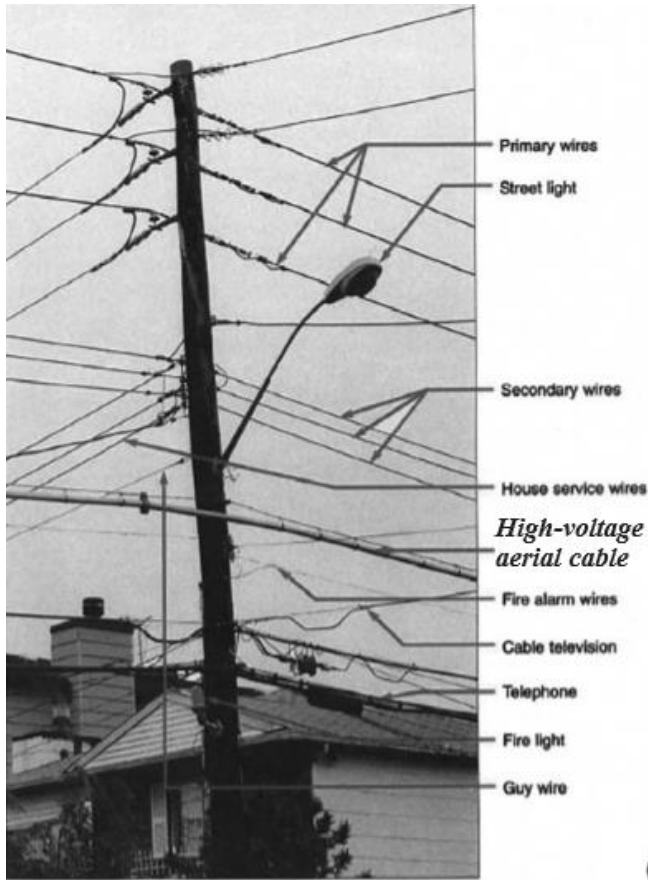


Where are high-voltage lines located on the pole? Firefighters always have been assured that the high-voltage wires are located on the top of



the pole. This is a safety precaution that keeps the high voltages far away from people and vehicles. There is, however, an important exception to this rule and Firefighters must be aware of it. Called aerial cable, it is located below the secondary wiring on the pole and often is mistaken for cable TV wires. Aerial cable can be encased in lead, aluminum or poly vinyl shielding, is attached to a supporting cable by hangers and can carry 4000V, 13,200V,

27,000V or 33,000V. That is right, there are high-voltage lines hanging below the secondary wires on utility poles. (See Photo #2.) The photo shows Primary Cable at the top of the pole, Secondary cable beneath it, and High Voltage Aerial Cable at the bottom.

Aerial cable is insulated, but if damaged poses an electrocution hazard. It is hung from a support cable by metal rings.